

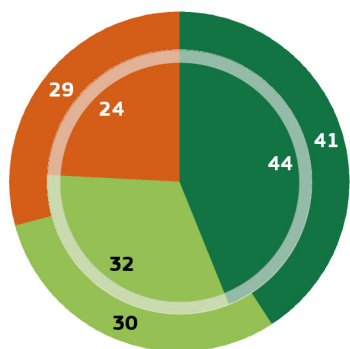
27.643 interviews  
04 > 20 / 12 / 2018

1.008 interviews  
04 > 16 / 12 / 2018

Methodology: face-to-face

### 1. AWARENESS OF BIODIVERSITY AND REASONS TO PROTECT IT

**QA1** Have you ever heard of the term "biodiversity"? (%)



EU28 Outer pie IT Inner pie

EU28		IT	
2018	2018-2015	2018	2018-2015
41	+ 11	44	+ 7
30	=	32	- 5
29	- 10	24	- 2
0	- 1	0	=

- You have heard of it and you know what it means
- You have heard of it but you do not know what it means
- You have never heard of it
- Don't know

Evolution May-June 2015 (EB83.4) - December 2018 (EB90.4)

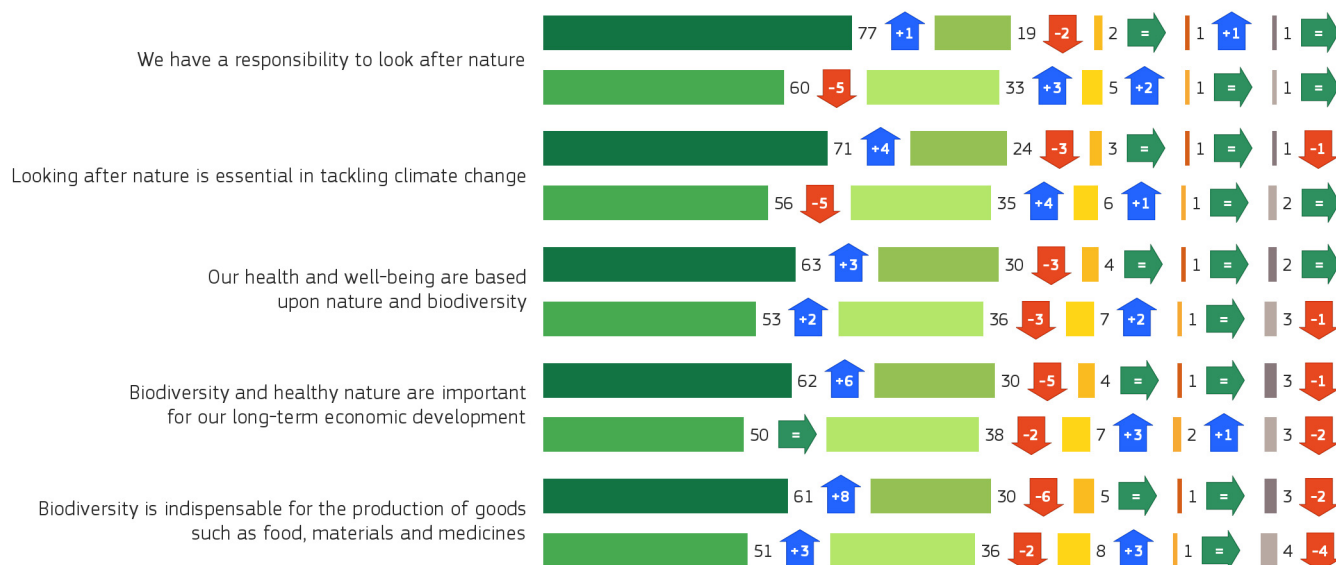
**QA1** Have you ever heard of the term "biodiversity"? (%)

Answer: You have heard of it and you know what it means

	EU28	IT
TOTAL	41	44
<b>Gender</b>		
Man	46	49
Woman	38	39
<b>Age</b>		
15-24	41	56
25-39	43	56
40-54	48	54
55+	36	29
<b>Education (End of)</b>		
15-	20	17
16-19	35	46
20+	59	67
Still studying	49	58

Socio-demographic breakdown

**QA2** I will read some statements about why it might be important to halt the loss of biodiversity. Please tell me how much you agree or disagree with them. (%)



EU28 IT

Totally agree Tend to agree Tend to disagree Totally disagree Don't know

Evolution May-June 2015 (EB83.4) - December 2018 (EB90.4)

27.643 interviews  
04 > 20 / 12 / 2018

1.008 interviews  
04 > 16 / 12 / 2018

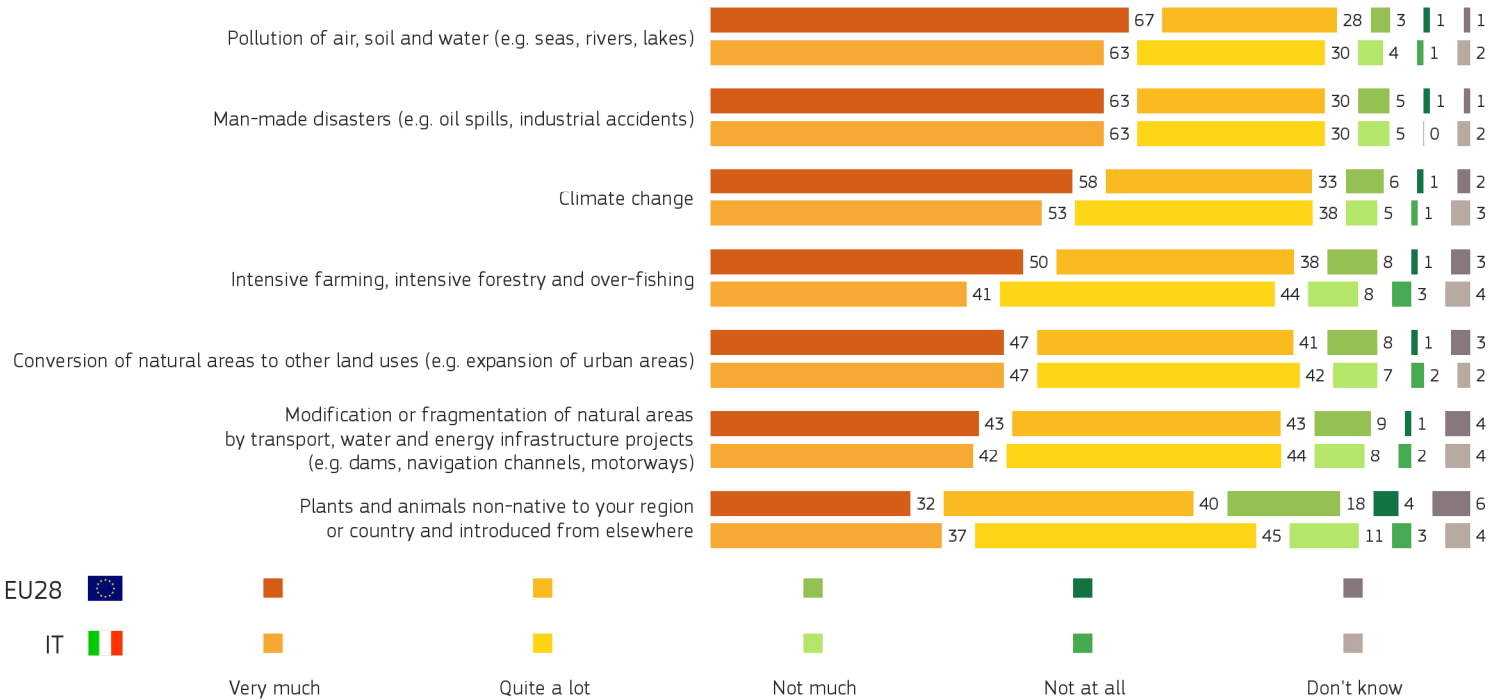
Methodology: face-to-face

ITALY

## 2. PERCEIVED THREATS TO BIODIVERSITY

QA3 In your opinion, in general, to what extent is biodiversity threatened by the following?

(%)



### Evolution May-June 2015 (EB83.4) - December 2018 (EB90.4)

QA3 In your opinion, in general, to what extent is biodiversity threatened by the following?

Answer: Very much (%)

	EU28		IT	
	2018	2018-2015	2018	2018-2015
Pollution of air, soil and water (e.g. seas, rivers, lakes)	67	+ 5	63	- 1
Man-made disasters (e.g. oil spills, industrial accidents)	63	+ 3	63	- 2
Climate change	58	+ 7	53	- 3
Intensive farming, intensive forestry and over-fishing	50	+ 3	41	=
Conversion of natural areas to other land uses (e.g. expansion of urban areas)	47	+ 3	47	- 3
Modification or fragmentation of natural areas by transport, water and energy infrastructure projects (e.g. dams, navigation channels, motorways)	43	+ 4	42	- 3
Plants and animals non-native to your region or country and introduced from elsewhere	32	+ 2	37	=

27.643 interviews  
04 > 20 / 12 / 2018

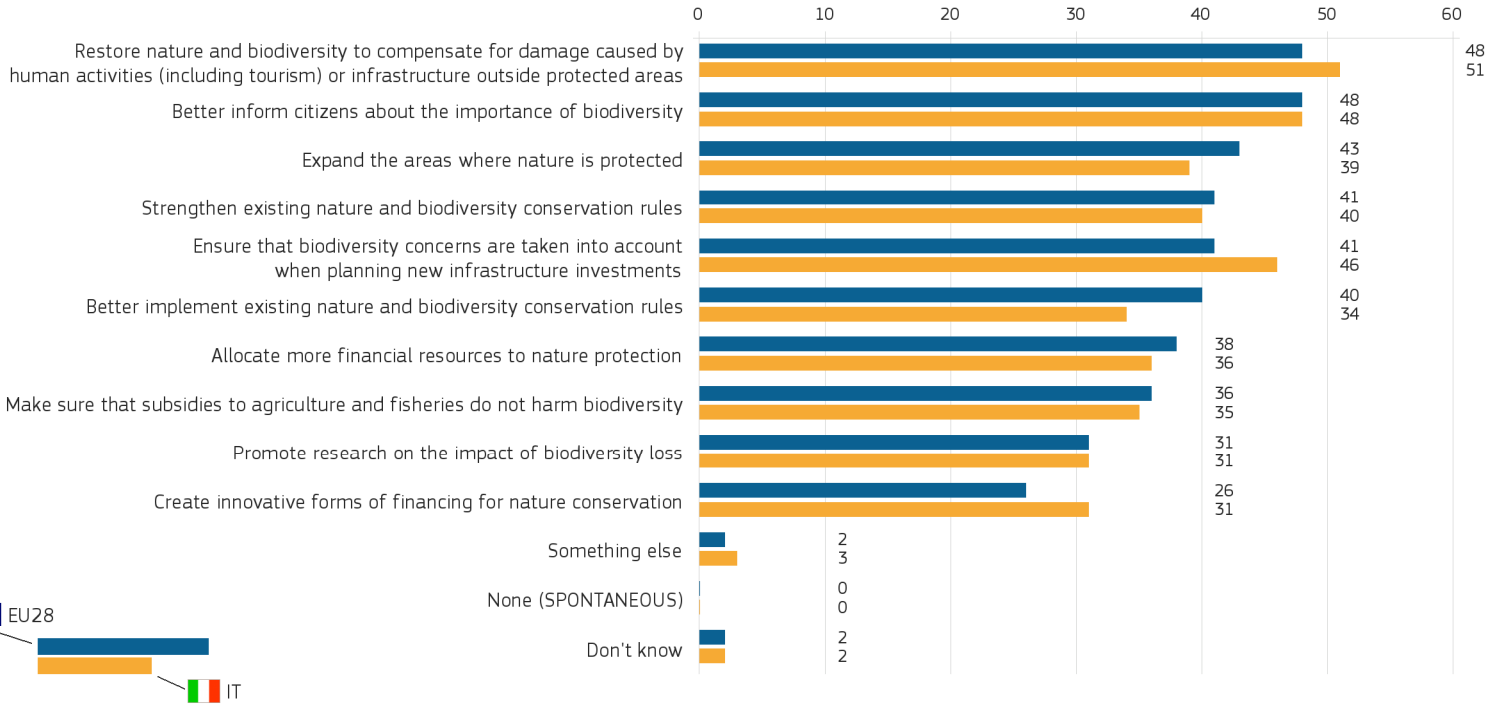
1.008 interviews  
04 > 16 / 12 / 2018

Methodology: face-to-face

ITALY

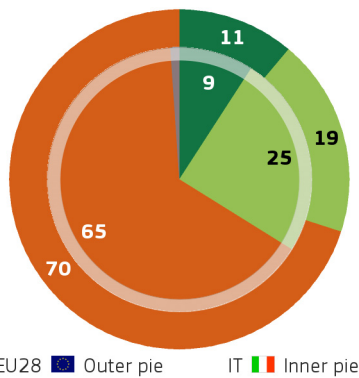
### 3. PROTECTING BIODIVERSITY

**QA4** Please tell me which, if any, of the following actions would be most important for the EU to take in order to protect biodiversity. (MAX. 5 ANSWERS)  
(%)



### 4. NATURE PROTECTION AREAS

**QA5** Have you heard of the Natura 2000 network?  
(%)



	EU28		IT	
	2018	2018-2015	2018	2018-2015
You have heard of it and you know what it is	11	+ 1	9	+ 2
You have heard of it but you do not know what it is	19	+ 3	25	+ 4
You have never heard of it	70	- 3	65	- 6
Don't know	0	- 1	1	=

Evolution May-June 2015 (EB83.4) - December 2018 (EB90.4)

**QA5** Have you heard of the Natura 2000 network?  
(%)

Answer: You have heard of it and you know what it is

	EU28	IT
TOTAL	11	9
<b>Gender</b>		
Man	13	10
Woman	9	8
<b>Age</b>		
15-24	8	8
25-39	12	15
40-54	14	10
55+	10	5
<b>Education (End of)</b>		
15-	3	3
16-19	9	9
20+	18	14
Still studying	10	10

Socio-demographic breakdown

27,643 interviews  
04 > 20 / 12 / 2018

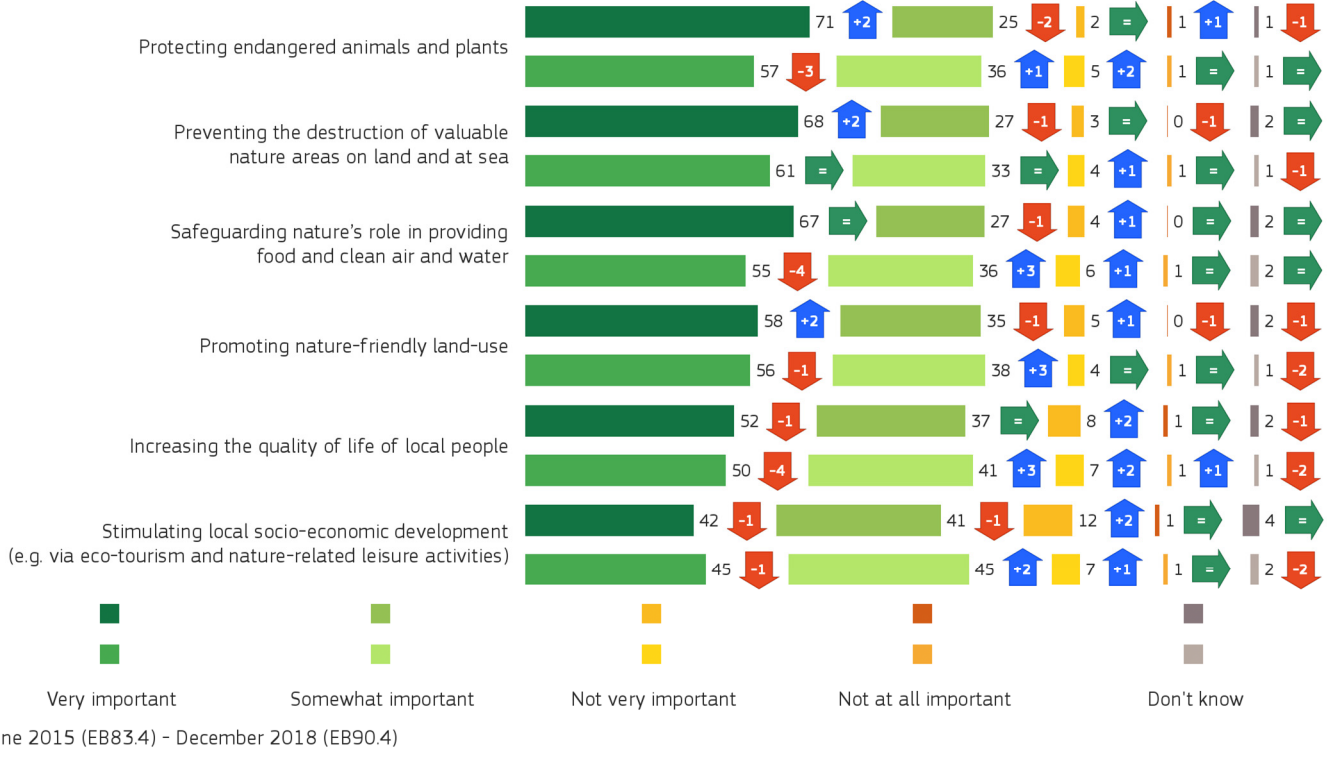
1,008 interviews  
04 > 16 / 12 / 2018

Methodology: face-to-face

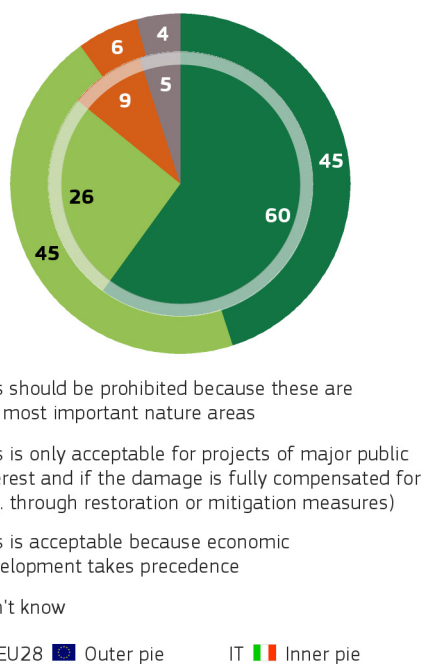
ITALY

### 4. NATURE PROTECTION AREAS

**QA6** Natura 2000 is a network of more than 27,500 nature protection areas all over the EU. How important do you think nature protection areas are for the following? (%)



**QA7** Sometimes economic development results in damage or destruction of nature in protected areas such as Natura 2000 sites. Which of the following statements comes closest to your opinion? (%)



Evolution May-June 2015 (EB83.4) - December 2018 (EB90.4)

**QA7** Sometimes economic development results in damage or destruction of nature in protected areas such as Natura 2000 sites. Which of the following statements comes closest to your opinion? (%)

	EU28		IT	
	2018	2018-2015	2018	2018-2015
This should be prohibited because these are our most important nature areas	45	-1	60	-2
This is only acceptable for projects of major public interest and if the damage is fully compensated for (e.g. through restoration or mitigation measures)	45	+4	26	=
This is acceptable because economic development takes precedence	6	-1	9	+2
Don't know	4	-2	5	=