



ICA2018

11th International Congress on Aerobiology

3-7 September 2018, Parma, Italy

The Italian Network POLLnet: the database as background to detect airborne pollen trends and investigate climate change effects

Vincenzo De Gironimo ¹, Fabiana Cristofolini ², M. Francesca Borney ³, Alessandro Travaglini ⁴, Elena Gottardini ², Patrizia Anelli ⁵, Bianca Maria Billi ⁶, Clara Bocchi ⁷, Edith Bucher ⁸, Francesca Cassoni ⁷, Simona Coli ⁶, Nicole Martinet ³, Annarosa Miraglia ⁴, Cinzia Para ⁵, Michele Rossi ⁸, Francesca Tassan-Mazzocco ⁹, Pierluigi Verardo ¹⁰, Stefano Marchesi ¹¹

¹-ISPRA - Istituto Superiore per la Protezione e la Ricerca Ambientale -

² Department of Biodiversity and Molecular Ecology, Research and Innovation Centre, Fondazione Edmund Mach (FEM)

³ Regional Agency for the Environment Protection of Aosta Valley (ARPA VdA)

⁴ Department of Biology, University of Rome "Tor Vergata"

⁵ Regional Agency for Prevention, Environment and Energy of Emilia-Romagna (ARPAE)- Rimini

⁶- Regional Agency for Prevention, Environment and Energy of Emilia-Romagna (ARPAE)- Bologna

⁷ Regional Agency for Prevention, Environment and Energy of Emilia-Romagna (ARPAE)- Parma

⁸ Environment Protection Agency Bolzano (APPA BZ)

⁹ Regional Agency for the Environment Protection of Friuli Venezia Giulia (ARPA FVG), SOS Qualità dell'aria sede di Trieste

¹⁰ Regional Agency for the Environment Protection of Friuli Venezia Giulia (ARPA FVG), SOS Qualità dell'aria sede di Pordenone

¹¹ Regional Agency for Prevention, Environment and Energy of Emilia-Romagna (ARPAE) - Modena



Main topics

1. The importance of the network
2. START date (DOY) trends
3. Role of temperature

The importance of the network



- 57 monitoring stations
- Hirst Type samplers
- Same protocol adopted
- One DataBase

Necessary prerequisite for data analysis

The importance of the network



- Aosta
- San Michele a/A
- Bolzano
- Pordenone
- Trieste
- Parma
- Bologna
- Rimini
- Roma

- Alnus
- Betula
- Corylus
- Cupress.-Taxaceae
- Fraxinus
- Olea
- Castanea
- Quercus
- Graminaceae
- Urticaceae
- Ambrosia
- Artemisia

2000-2016

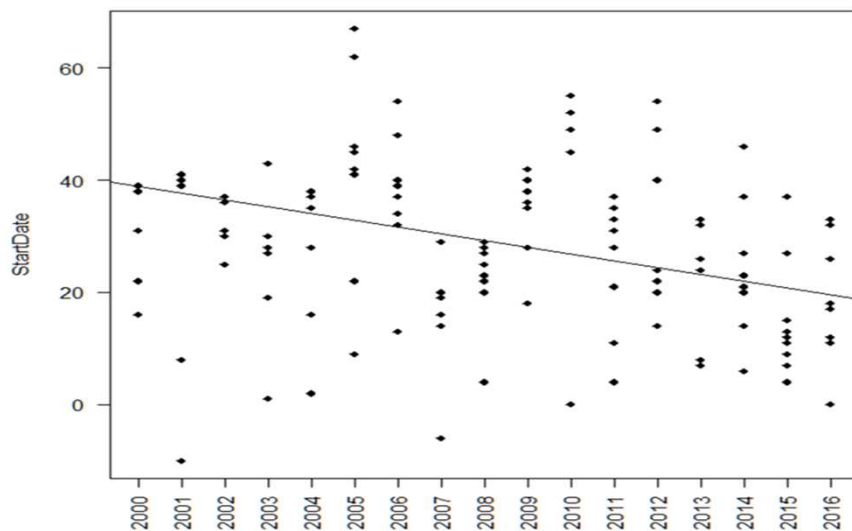
&

Meteo data
available

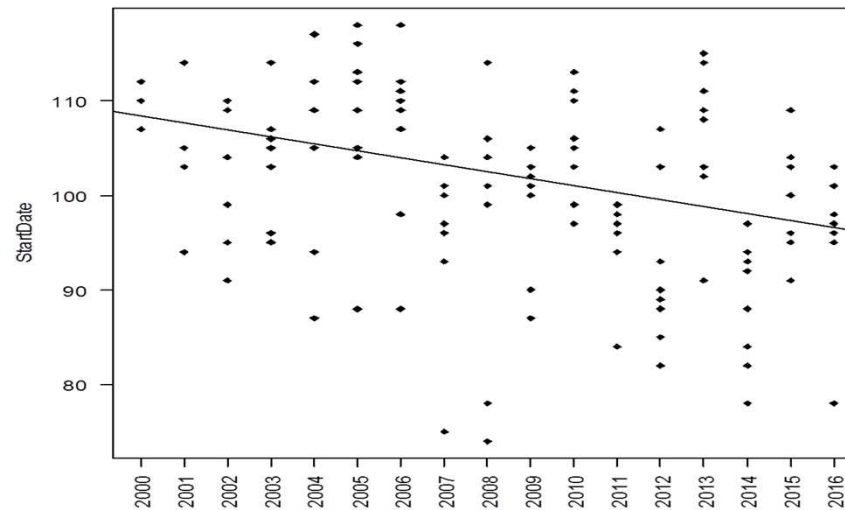
QA: only data with completeness >75%

START date (2.5%) trends

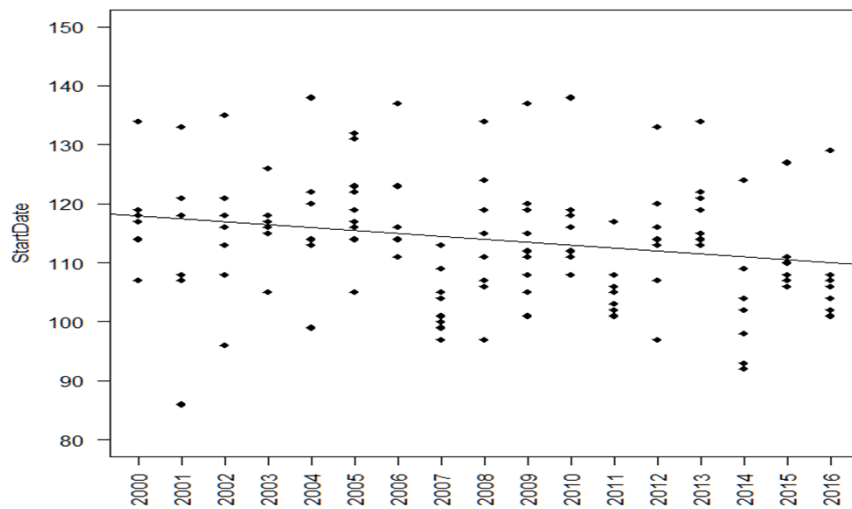
CORYLUS



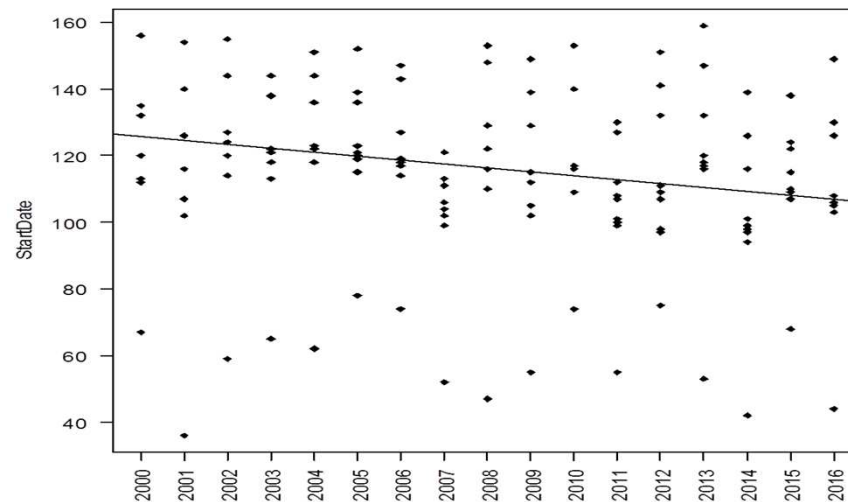
QUERCUS



GRAMINACEAE



URTICACEAE



Role of TEMPERATURE

Start date (DOY) vs Temperature min and max (mean monthly temperature)
Non parametric Spearman correlations

	CORYLUS		QUERCUS		GRAMINACEAE		URTICACEAE	
	Percentage of stations with significant correlations		Percentage of stations with significant correlations		Percentage of stations with significant correlations		Percentage of stations with significant correlations	
	T min	Tmax	T min	Tmax	T min	Tmax	T min	Tmax
October								
November								
December		56% —						
January	67% —	78% —			56% —			
February					78% —	56% —	63% —	
March				89% —	67% —	67% —	63% —	50% —
April						67% —		63% —

 Month of flowering

Vincenzo De Gironimo , M.Francesca Borney, Alessandro Travaglini ,
Elena Gottardini , Patrizia Anelli , Bianca Maria Billi , Clara Bocchi, Edith
Bucher , Francesca Cassoni , Simona Coli, Nicole Martinet , Annarosa
Miraglia, Cinzia Para, Michele Rossi, Francesca Tassan-Mazzocco ,
Pierluigi Verardo, Stefano Marchesi

Thanks for the attention